



Subsidiary of SM Traders

SECURE MOTORS TACTICAL

A R M O R E D C A R S



Your Secure Passage Guaranteed

Introduction

Overview SMTAC, a subsidiary of SM Traders, is a premier manufacturer of advanced armored passenger vehicles. With 20 years of industry experience, we are committed to delivering exceptional quality and building long-lasting client relationships

SMTAC specializes in the armoring of both civilian and military vehicles, utilizing nearly 2 decades of expertise to provide :

- **Customized Armor Solutions :** We employ advanced ballistic materials to ensure optimal protection.
- **In-House Engineering :** Our dedicated engineering team collaborates closely with our research and development department to innovate effective protective solutions.
- **Rigorous Testing :** We conduct extensive independent laboratory testing to validate the efficacy of our products.

Choosing SMTAC provides several key benefits :

- **Cost-Effective Solutions :** Competitive pricing without sacrificing quality.
- **Unmatched Lightweight Armoring :** Innovative design reduces vehicle weight while enhancing protection.
- **Comprehensive Warranty :** Assurance of product reliability and durability.
- **Local Technical Support :** Prompt assistance to ensure optimal vehicle performance.
- **Exclusive Use of Ballistic Materials :** Ensuring the highest standards of safety.
- **3S Services:** Comprehensive support in Sales, Services, and Spares.

MESSAGE FROM THE CEO

At Secure Motors Tactical Armored Cars (SMTAC), our mission is to deliver top-tier security solutions tailored to protect your most valuable assets. We are committed to providing the highest level of vehicle protection for both government and private sector clients across Pakistan.

SMTAC specializes in state-of-the-art armored vehicles and security solutions, continuously evolving to address emerging threats. Our expertise, gained in high-risk environments globally, ensures that we can effectively meet the security needs of our diverse clientele, including the Armed Forces, law enforcement, and corporate organizations

Looking ahead, we remain focused on expanding our capabilities and maintaining the quality and reliability that have made SMTAC a trusted name in the defense and security industry. Our products continue to set the benchmark for performance and protection, and we are eager to forge new partnerships and contracts with both government agencies and private clients.

I encourage you to visit our website to explore our extensive portfolio of security solutions and learn about our innovative offerings.

your sincerely,
Khurram Hamirani
CEO, Secure Motors Tactical Armored Cars (SMTAC)

The range of products we provide.

Vehicle Bulletproofing

Vehicle bulletproofing is one of our main focus. Offering various options to meet diverse protection needs.

- SUV
- Sedans
- Luxury Cars
- Passenger Buses
- Armored Personnel Carrier (APC)
- Customized Protected Vehicles

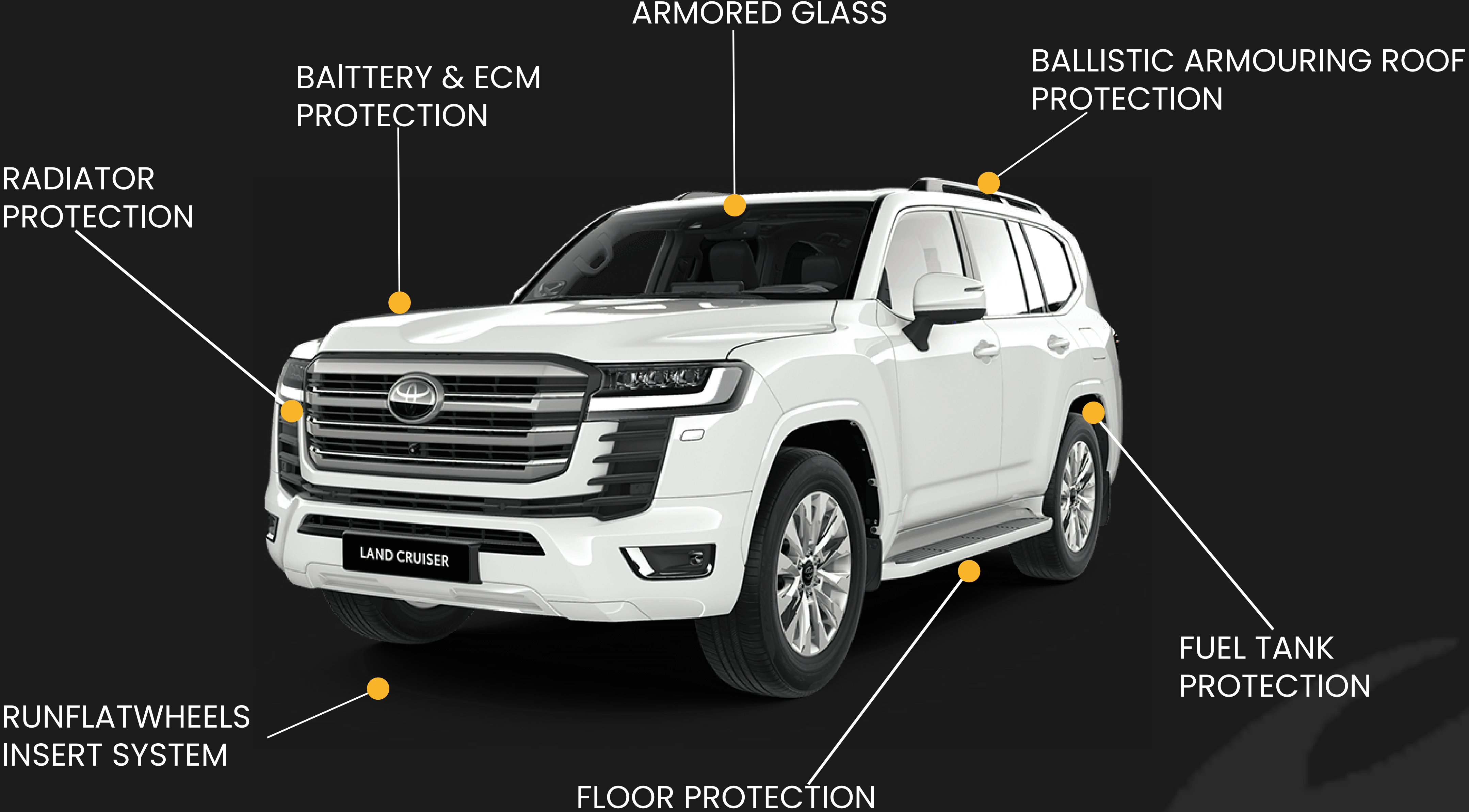


Custom Armoring Solutions

We provide tailored armoring solutions to meet the specific needs of each clients. Whether it be government officials or private sector clients, we design and tailor our work to meet our clients' needs Providing them with the best.



SMTAC Armoring Solutions





Subsidiary of SM Traders

PRODUCTS

CUSTOMIZED ARMORING SOLUTIONS



Your Secure Passage Guaranteed



(EN) EUROPEAN BALLISTIC STANDARDS

Level	WEAPON	Projectile			Speed ±(10m/sec)	Shots ±10mm
		Caliber(mm)	Mass(g)+0.1	Type		
FB/BR4		9mm Luger -357 Magnum -44rem Magnum	0.8 10.2 15.6	FJ / CB / 8C	400 430 440	3 on a 120mm
FB/BR4+		7.62x39"	8.0	FJ / CB / 8C	710	3 on a 120mm
FB/BR5		5.56x45"	4.0	FJ / PB / 8CPI	950	3 on a 120mm
FB/BR6		7.62x51"	9.5	FJ / PB / 8C	830	3 on a 120mm
FB/BR7		7.62x51"	9.8	FJ / PB / HC	820	3 on a 120mm

NIJ Standard-01808.01

PROTECTIVE MATERIALS

ARMOR TYPE	WEAPON	TEST AMMUNITION	NOMINAL BULLET MASS	SUGGESTED BARREL LENGTH	REQUIRED BULLET VELOCITY	HITS PER ARMOR SPECIMEN
I		22 LRHV	2.6 g	15 to 16.5 cm	320 + 12 m/s	5
		38 Special RN Lead	40 gr 10.2 g 158 gr	6 to 6.5 in 15 to 16.5 cm 6to 6.5 in	1050 + 40 ft/s 259 + 15 m/s 850 + 50 ft/s	5
II-A		.357 Magnum JSP	10.2 g	10 to 12 cm	381 + 15 m/s	5
		9mm FMJ	158 gr 8.0 g 124 gr	4 to 4.75 in 10 to 12 cm 4 to 4.75 in	1250 + 50 ft/s 332 + 12 m/s	5
II		.357 Magnum JSP	10.2 g	15 to 16.5 cm	425 + 15 m/s	5
		9mm FMJ	158 gr 8.0 g 124 gr	6 to 6.5 in 10 to 12 cm 4 to 4.5 in	1395 + 50 ft/s 358 + 12 m/s 1175 + 40 ft/s	5
III-A		.44 Magnum Lead SWC	15.55 g	14 to 16 cm	426 + 12 m/s	5
		Gas Checked 9 mm FMJ	240 gr 8.0 g 124 gr	5.5 to 6.25 in 24 to 26 cm 9.5 to 10.25 in	1400 + 40 ft/s 426 + 15 m/s 1400 + 50 ft/s	5
III		Cal 5.45mm	9.7 g	56cm	838 + 15 m/s	5
		Cal 5.56 mm Cal 7.62 mm .308 Winchester FMJ	150 gr	22in		5
IV		30-06 AP	10.8 g 166 gr	56cm 22in	838 + 15 m/s 2850 + 50 ft/s	5 5

Toyota Land Cruiser 300

- **Vehicle Classification :** Full-size SUV
- **Luxury and Performance :** Combines luxury features with exceptional off-road capabilities.
- **Engine and Drive System :** Equipped with a powerful engine and advanced four-wheel-drive system for navigating tough terrains.
- **Design :** Engineered for both comfort and durability.
- **Armoring :** Popular choice for adding armor due to its strong construction.
- **Security Features :** Enhanced with bulletproofing and fortified security options
- **Use Case :** Ideal for high-risk operations, providing superior protection and confidence in various environments.



Bullet Proofing Protection Level B6
Also Available in B7

Toyota Land Cruiser 200

- **Vehicle Classification :** The Toyota Land Cruiser TLC 200 is a robust and reliable SUV designed for off-road performance.
- **Engine and Chassis :** Features a powerful engine and a sturdy chassis, making it suitable for heavy-duty applications while ensuring passenger comfort.
- **Armoring Potential :** The option for armoring further enhances the vehicle's ruggedness, providing superior protection in hazardous environments.
- **Reinforced Security :** Equipped with armored reinforcements, the TLC 200 offers secure transportation for VIPs and security personnel.
- **Defense Capabilities :** Guarantees maximum defense against potential threats, ensuring safety in high-risk situations.



Bullet Proofing Protection Level B6
Also Available in B7

Lexus LX 570

- **Vehicle Classification** : The Lexus LX 570 is a full-size luxury SUV that integrates refined elegance with off-road capability.
- **Engine Performance** : Equipped with a powerful engine, it delivers smooth performance across rugged terrains.
- **Interior Features** : The vehicle boasts a plush interior, offering premium comfort and advanced technology.
- **Four-Wheel-Drive System** : An advanced four-wheel-drive system allows the LX 570 to navigate challenging conditions with ease.
- **Four-Wheel-Drive System** : The potential for armoring enhances its already robust design, providing a high level of security for VIPs and high-profile passengers.
- **Safety and Luxury** : With its armored features, the LX 570 ensures a seamless blend of luxury and unparalleled safety in various environments.



Bullet Proofing Protection Level B6

Also Available in B7

Range Rover Luxury SUV

- **Vehicle Classification :** The Range Rover is a luxury SUV that integrates elegance with advanced technology and exceptional off-road capabilities.
- **Engine Performance :** Renowned for its powerful engine, the vehicle provides a smooth and comfortable ride across diverse terrains.
- **Interior Features :** Features a refined interior that enhances passenger comfort and incorporates modern technological advancements.
- **Armoring Potential :** The option for armoring adds an extra layer of protection, making it suitable for high-profile passengers who require discreet yet robust security.
- **Safety Features :** With armored modifications, the Range Rover safeguards passengers against external threats, ensuring security without sacrificing luxury.



Bullet Proofing Protection Level B6

Armored Mercedes-Benz

- **Vehicle Classification :** The Mercedes-Benz S-Class represents the pinnacle of luxury and innovation in the automotive industry.
- **Comfort and Performance :** Offers superior comfort and powerful performance, catering to the demands of discerning clientele.
- **Interior Features :** Features a refined interior that enhances passenger comfort and incorporates modern technological advancements.
- **Advanced Technology :** Equipped with cutting-edge technological features that enhance the driving experience and provide convenience.
- **Interior Design :** The spacious, spatial design is specifically designed for executives who prioritize excellence in their vehicle choice.
- **Armoring Options :** Armoring the S-Class allows for discreet protection, maintaining its sophisticated aesthetic.
- **Peace of Mind :** Guarantees ultimate peace of mind, allowing passengers to travel in elegance while being shielded from external threats.



Bullet Proofing Protection Level B6

BMW X Series Luxury SUVs

- **Vehicle Classification :** The BMW X Series is a versatile lineup of luxury SUVs recognized for dynamic performance and innovative technology.
- **Performance Capability :** Delivers a smooth and powerful driving experience, suitable for both urban environments and challenging terrains.
- **Interior Quality :** Features spacious cabins with premium interiors, designed to enhance passenger comfort.
- **Armoring Potential :** The option to armor the X Series provides an additional layer of defense, making it suitable for secure transport in high-risk areas.
- **Enhanced Security :** With armored enhancements, the X Series ensures complete security while maintaining its distinctive style and agility.



Bullet Proofing Protection Level B6

Cadillac Escalade Luxury SUV

- **Vehicle Classification :** The Cadillac Escalade is a bold, full-size luxury SUV distinguished by its commanding presence and design.
- **Engine Performance :** Features a powerful engine, providing robust performance suitable for diverse driving conditions.
- **Interior Technology :** Boasts an expansive, technologically advanced interior, enhancing the overall passenger experience.
- **Safety Systems :** Equipped with advanced safety systems, the Escalade is a preferred choice for VIP and executive transport.
- **Armoring Options :** The potential for armoring provides maximum protection, ensuring passenger security in high-risk environments.
- **Overall Experience :** The vehicle effectively combines luxury, safety, and performance, catering to the needs of high-profile individuals.



Bullet Proofing Protection Level B6
Also Available in B7

Toyota Prado Full-Size SUV

- **Vehicle Classification :** The Toyota Prado is a full-size SUV that effectively combines off-road capability with contemporary design and passenger comfort.
- **Durability and Performance :** Renowned for its rugged durability and reliable performance, the Prado excels in navigating harsh terrains.
- **Passenger Comfort :** Provides a comfortable ride for occupants, balancing functionality with a pleasant driving experience.
- **Safety Features :** Equipped with advanced safety and four-wheel (4x4) features, making it a preferred option for armoring.
- **Armoring Potential :** The Prado's design allows for effective armoring, enhancing its resilience in high-risk environments.
- **Protection Capabilities :** With armored modifications, the Prado offers unparalleled protection, ensuring the security of passengers in various situations.



Bullet Proofing Protection Level B6

Toyota Fortuner Full-Size SUV

- **Vehicle Classification :** The Toyota Fortuner is a full-size SUV recognized for its robust off-road capabilities and rugged design.
- **Engine Options :** Available with reliable diesel or petrol engine, providing smooth performance on both highways and challenging terrains.
- **Interior Features :** The spacious, premium interior incorporates modern technology alongside advanced safety and protection systems, ensuring a comfortable and secure ride.
- **Versatility :** The Fortuner's design and functionality make it suitable for family use as well as adventure-driven off-road excursions.
- **Armoring Potential :** The option for armored security enhances the vehicle's protective capabilities, providing unparalleled peace of mind for occupants.
- **Overall Experience :** Combines comfort, safety, and versatility, catering to diverse needs and environments for users.



Bullet Proofing Protection Level B6

Toyota Tundra Powerful V8 Engine

- **Vehicle Classification :** The Toyota Tundra is a full-size pickup truck distinguished by its powerful V8 engine and notable towing capacity.
- **Engine Performance :** Designed for heavy-duty tasks, the Tundra adeptly navigates tough terrains with ease.
- **Design and Comfort :** Features a rugged exterior combined with a comfortable, technology-equipped cabin, making it suitable for both work and leisure activities.
- **Chassis and Reliability :** Its strong chassis and overall reliability position the Tundra as an ideal candidate for armoring, enhancing its security features.
- **Armoring Options :** The potential for armored modifications elevates the Tundra's utility, enabling secure transport in demanding environments.



Bullet Proofing Protection Level B6
Also Available in B7

Toyota Hilux Revo

- **Vehicle Classification :** The Toyota Hilux Revo is a mid-size pickup truck recognized for its rugged durability and off-road capabilities.
- **Engine and Chassis :** Powered by a robust diesel engine, the Hilux Revo provides excellent towing capacity and commendable fuel efficiency.
- **Interior Features :** The vehicle boasts a modern, comfortable cabin equipped with advanced technology and safety features, ensuring a smooth driving experience.
- **Versatility :** The Hilux Revo is suitable for both work-related tasks and adventurous off-road journeys, demonstrating its adaptability to various applications.
- **Armoring Potential :** The option for armored protection enhances the vehicle's security features, making it suitable for demanding environments.



Bullet Proofing Protection Level B6

ISUZU D-Max

- **Vehicle Classification :** The Isuzu D-Max is a versatile and reliable vehicle design for a range of demanding tasks.
- **Off-Road Performance :** Delivers excellent off-road capabilities, making it suitable for both commercial and personal use.
- **Engine and Design :** Equipped with a powerful engine and a spacious design, ensuring a practical and comfortable driving experience.
- **Sturdy Build :** The D-Max's robust construction and adaptability render it suitable for armoring, enhancing its security features in high-risk environments.
- **Sturdy Build :** The D-Max's robust construction and adaptability render it suitable for armoring, enhancing its security features in high-risk environments.



Bullet Proofing Protection Level B6

Toyota Corolla SUV

- **Vehicle Classification :** The Toyota Corolla Cross is a compact SUV that effectively combines fuel efficiency and practicality.
- **Target Environments :** Ideal for urban and semi-rural settings, making it suitable for diverse driving conditions.
- **Interior Features :** Offers a spacious, technology-equipped interior that enhances passenger comfort and convenience.
- **Safety and Handling :** Incorporates advanced safety features and smooth handling, contributing to its versatility.
- **Armoring Potential :** The option for armoring provides an additional layer of security, making it suitable for transporting families and loved ones in both city and off-road scenarios.
- **Discreet Security :** Its compact footprint, combined with armored protection, allows for discreet yet secure transport during sensitive tasks.
- **Overall Assurance :** Enables users to navigate various terrains with confidence, benefiting from enhanced protection and security.



Bullet Proofing Protection Level B6

Kia Carnival

- **Vehicle Classification :** The Kia Carnival is a premium van designed to accommodate large families or executive travel.
- **Interior Features :** Boasts a spacious, high-tech interior that enhances passenger comfort and convenience.
- **Engine Performance :** Powered by a strong engine, ensuring smooth rides even during long journeys.
- **Robust Design :** The vehicle's sturdy frame and versatile design make it suitable for armoring, balancing comfort with security.
- **Security Enhancements :** Armored modifications ensure the van is secure for high-profile passengers, such as dignitaries or executives, traveling in sensitive areas.
- **Safety Assurance :** With reinforced armoring, the Carnival offers unparalleled safety, allowing passengers to travel with confidence.



Bullet Proofing Protection Level B6

Kia Sorento Full-Size SUV

- **Vehicle Classification :** The Kia Sorento is a full-size SUV recognized for its contemporary design and robust performance.
- **Interior Features :** Offers a spacious cabin equipped with advanced technology, enhancing the overall driving experience.
- **Engine and Safety :** Features a reliable engine and comprehensive safety systems, making it suitable for long drives and challenging terrains.
- **Armoring Potential :** The option for armoring provides enhanced protection, positioning the Sorento as a top choice for secure transport.
- **Security Applications :** The additional layers of security make it an ideal vehicle for families or businesses operating in uncertain environments.
- **Protection and Confidence :** With state-of-the-art armoring, the Sorento delivers ultimate protection and security, ensuring peace of mind for passengers.



Bullet Proofing Protection Level B6

MG HS SUV

- **Vehicle Classification :** The MG HS is a stylish and spacious cross over vehicle that effectively combines luxury with practicality.
- **Engine Performance :** Equipped with a turbocharged engine, it delivers a smooth and efficient driving experience.
- **Interior Features :** The interior includes modern technology and comprehensive safety features, enhancing passenger convenience and security.
- **Robust Construction :** Its strong build makes the MG HS suitable for armoring, adding an essential layer of protection in high-risk environments.
- **Security and Style :** The combination of elegance and advanced security features positions the MG HS as an ideal choice for safe yet stylish travel.
- **Armored Capabilities :** With reinforced armoring, the MG HS ensures secure and worry-free journeys, regardless of the destination.



Bullet Proofing Protection Level B6

Toyota Land Cruiser 100 SUV

- **Vehicle Classification :** The Toyota Land Cruiser 100 is a full-size SUV designed for extreme off-road capability and durability.
- **Engine and Performance :** Equipped with a powerful engine and an advanced four-wheel-drive (4x4) system, it excels in navigating tough terrains.
- **Interior Features :** The interior provides comfort and modern amenities, making it suitable for long-distance travel.
- **Reliability and Construction :** Renowned for its legendary reliability and rugged construction, the Land Cruiser 100 is an excellent candidate for armoring.
- **Security Applications :** Offers superior protection in hostile environments, making it a preferred choice for military, security, and VIP protection services globally.
- **Armored Upgrades :** With armored modifications, the TLC 100 delivers unmatched security, ensuring passenger safety in unpredictable conditions.



Bullet Proofing Protection Level B6
Also Available In B7

Toyota Camry Luxury Sedan

- **Vehicle Classification :** The Toyota Camry is a luxury sedan known for its stylish design and executive appeal.
- **Fuel Efficiency :** Offers notable fuel efficiency, making it economical for both urban and long-distance travel.
- **Interior Features:** Spacious interior equipped with the latest technology for enhanced comfort and connectivity.
- **Performance and Safety :** Refined performance coupled with high safety ratings ensures a smooth and secure driving experience.
- **Armoring Suitability :** The Camry is a strong candidate for armoring, providing discreet yet robust protection.
- **Security Applications :** Ideal for corporate and personal use, delivering enhanced security without compromising aesthetics.
- **Armored Upgrades :** Customizable armoring solutions maintain



Bullet Proofing Protection Level B6

Toyota Corolla sedan

- **Vehicle Classification :** The Toyota Corolla is a cross over vehicle sedan recognized for its practicality and versatility.
- **Fuel Efficiency :** Noted for outstanding fuel efficiency, contributing to cost-effective daily commuting.
- **Reliability :** Esteemed for its long-standing reputation for reliability and durability in various driving conditions.
- **Interior Comfort :** Features a spacious and comfortable interior, enhancing the overall driving experience.
- **Smooth Handling:** Offers responsive handling, facilitating ease of maneuverability in urban environments.Offers responsive handling, facilitating ease of maneuverability in urban environments.



Bullet Proofing Protection Level B6

Toyota Land Cruiser 79

- **Vehicle Classification :** The Toyota Land Cruiser 79 Series is an off-road vehicle specifically engineered for extreme conditions.
- **Engine and Performance :** Equipped with a powerful engine that delivers exceptional performance in rugged terrains.
- **Ground Clearance :** Features high ground clearance, enhancing its ability to navigate challenging landscapes.
- **Durability and Reliability :** Renowned for its durability and reliability, making it a preferred choice for demanding environments.
- **Armoring Suitability :** Highly suitable for armoring, providing superior security in high-risk areas without compromising performance.
- **Security Applications :** Favored by military and security forces for its robust design and off-road capabilities.



Bullet Proofing Protection Level B6

Nissan Patrol Full-Size SUV

- **Vehicle Classification :** The Nissan Patrol is a full-size SUV that integrates luxury with exceptional off-road performance.
- **Engine Performance :** Equipped with a powerful engine, ensuring excellent handling on urban roads as well as rugged terrains.
- **Interior Comfort :** Features a spacious interior designed for comfort, complemented by advanced technological amenities.
- **Durability and Robustness :** Renowned for its durability and robust frame, making it a strong candidate for armoring applications.
- **Armoring Suitability :** Provides high-level protection without compromising performance, suitable for various security needs.
- **Off-Road Capability :** Strong off-road abilities render it ideal for security operations in unpredictable and challenging environments.



Bullet Proofing Protection Level B6
Also Available In B7

Toyota Hiace Van

- **Vehicle Classification :** The Toyota Hiace is a versatile and reliable van, well-suited for transporting both passengers and cargo.
- **Engine Performance :** Features a strong engine that provides the necessary power for commercial use and long-distance journeys.
- **Interior Space :** Offers a spacious interior designed for comfort and practicality, accommodating various transport needs.
- **Performance and Safety :** Refined performance coupled with high high safety ratings ensures a smooth and secure driving experience.
- **Durability :** Known for its durable build, making it a solid choice for demanding operational environments.
- **Armoring Suitability :** The Hiace's capacity and structural integrity make it an excellent candidate for armoring solutions.
- **Security Applications :** Ensures secure transport for passengers and goods in potentially risky areas, enhancing safety.



Bullet Proofing Protection Level B6

Toyota Coaster

- **Vehicle Classification :** The new Toyota Coaster is a spacious, high-comfort bus designed for passenger transport with an emphasis on enhanced ride quality and safety.
- **Target Environments :** Well-suited for urban and intercity travel, it offers a smooth and quiet ride, making it ideal for long-distance or group travel.
- **Interior Features :** The Coaster's enlarged dimensions provide a roomy interior designed for optimal passenger comfort, with a focus on minimizing noise and maximizing relaxation.
- **Safety and Handling :** Equipped with advanced safety features, the vehicle ensures a secure and stable ride, offering protection to multiple passengers in a well-armored environment.
- **Security Applications :** The Coaster offers the option for armoring, adding an extra layer of security for passengers, particularly in high-risk or sensitive environments.
- **Discreet Security :** Despite its size, the vehicle maintains a quiet and unobtrusive profile, allowing for discreet transportation without compromising on safety.



Bullet Proofing Protection Level B6

CHTC Buses

- **Vehicle Classification :** CHTC buses are heavy-duty commercial vehicles designed for long-distance transport and challenging road conditions, with a focus on power, durability, and efficiency.
- **Target Environments :** Ideal for long-distance routes, rough terrains, and environments requiring robust transport solutions, ensuring reliable performance under demanding conditions.
- **Interior Features :** These buses are built to accommodate large payloads while offering a durable, functional interior suited for extended use.
- **Safety and Handling :** Equipped with advanced safety features, CHTC buses provide stability and secure handling, ensuring safe transit even on difficult roads.
- **Armoring Potential :** The option for armoring enhances security, making these buses ideal for transporting high-value goods or passengers through high-risk areas.



Bullet Proofing Protection Level B6

Yutong Passenger Bus

- **Vehicle Classification :** The Yutong Bus is a dependable and comfortable passenger vehicle designed for intercity and long-distance travel, catering to large groups with a focus on comfort and reliability.
- **Target Environments :** Perfect for both urban and long-distance routes, it excels in providing a smooth and relaxing ride, making it ideal for transporting passengers over extended journeys.
- **Interior Features :** The bus offers a spacious, well-equipped interior with modern amenities, enhancing the overall passenger experience and ensuring comfort during long trips.
- **Safety and Handling :** Built with solid construction, the Yutong Bus ensures stable handling and a secure, smooth ride, making it well-suited for both short and long-distance travel.
- **Armoring Potential :** With robust construction, the Yutong Bus is highly suitable for armoring, offering an added layer of security for passenger transport in high-risk or sensitive environments.



Bullet Proofing Protection Level B6

SPECIFICATION

ENHANCEMENT	Modification	MAKE / ORIGIN
1. Passenger Cabin Protection	The entire Passenger Cabin inside area shall be armored with an armour poly steel. It will be installed inside the doors and cabin cavity and the original door and cabin panel will be reinstalled offering lightweight protection.	Made in Europe
2. Armored Doors Panels Assembly / Armored Window	Rear and sides flat ballistic Glass will be installed from inside with framing system. Doors armored and fitted in an inside door application with original door panels left intact. Substrate material and fastening included. Overlap is used around each window to prevent gaps. All existing windows are replaced with ballistic glass/polycarbonate matrix offering lightweight protection. Each vehicle kit will consist of all doors, all windows in the vehicle.	Complete Sets US COMPANY Made in UAE
3. Runflat Inserts	Run flats inserts are fitted in 04 tires of the vehicles.	Euoplast Made in Germany
4. "A", "B" and "C" Pilar Post	Armored, contoured panels are installed between the front and rear seats.	Made in Europe
5. Shin Guard Panels	Armored panels are installed under the front fenders offering protection to the feet/ shin.	Made in Europe
6. Brakes	Brakes are upgraded to compensate for most of the extra weight of the armor to maintain safety standards.	Made in Australia
7. Interior Fire wall Panel & Floor	Protection inside firewall and floor protection.	Made in Europe
8. Hinges	All hinges are re-enforced and fitted in accordance with doors weight.	Made in Dubai
9. Suspension	Vehicle suspension system is upgraded to accommodate extra weight of the armor.	Made in Australia
10. Fuel Tank Protection	Fuel Tank protection is installed.	Made in Europe
11. Engine & ECM Unit	Radiator, ECM unit and Brake lines are protected.	Made in Europe



bulletproofpakistan.com

Karachi Office: Plot No. 217, Deh Dih, Sector 39, Korangi Industrial Area, Karachi.

Rawalpindi / Islamabad Office: House # 160, Street 1, Phase-7, Bahira Town, Rawalpindi

Here's how some of the way we customize your vehicle for maximum protection:

To fully comprehend how we leverage our expertise to deliver highly tailored products that address your specific needs, we will outline some of the processes we undertake during the interim period while your product is being prepared.

- The entire interior of the passenger cabin will be reinforced with armored poly-steel. This material will be applied within the doors and cabin cavities, with the original door and cabin panels being reinstated, thereby providing enhanced protection while maintaining a reduced weight.
- Ballistic glass panels will be installed on the entire vehicle from the interior using a framing system. The armored doors will be fitted internally, retaining the original panels. The kit includes substrate materials, fastenings, and overlaps around each window to prevent gaps. All existing windows will be replaced with ballistic glass and polycarbonate for the light weight protection, covering all doors and windows in the vehicle.
- Armored, contoured panels will be installed between the front and rear seats, providing enhanced protection while maintaining the vehicle's interior design. These panels are specifically shaped to fit seamlessly within the cabin, offering both structural integrity and ballistic defense without compromising comfort or space.
- Armored panels will be installed beneath the front fenders, providing additional protection to the feet and shins. These panels are designed to shield vulnerable areas from potential threats while maintaining the vehicle's overall durability and structural integrity.
- The braking system is upgraded to accommodate the increased weight of the armor, ensuring that safety standards are upheld and the vehicle remains responsive and effective under heavier loads.
- The firewall and floor are reinforced with additional protection, safeguarding critical areas from potential threats while maintaining the vehicle's overall structural integrity.
- The vehicle's suspension system is upgraded to support the added weight of the armor, ensuring stability and optimal performance under the increased load.
- To ensure full protection, Fuel tank protection will also be installed .
- The radiator, ECM unit, and brake lines are fully protected, ensuring the vehicle's essential systems remain intact and functional under adverse conditions.

AKA ZARB-E-HAIDER

- Designed to carry seven soldiers, featuring a mounted machine gun for enhanced combat readiness.
- Cost-effective production, allowing four vehicles to be made for the price of one traditional APC, making it affordable for smaller military units, law enforcement, and private security.
- Adaptability to rugged terrains ensures operational versatility for patrols, counter-terrorism missions, and convoy protection.
- Armour protection provides resistance against small arms fire and blasts, significantly enhancing personnel safety.
- Plays a crucial role in securing national assets, minimizing casualties, and improving mission success in hostile environments.

Key Features :

Transparent Armour (B6+ 7.62x51 NATO)

- OEM glass replaced with curved ballistic glass.
- All ballistic glass rated to B6 standards.

Armour :

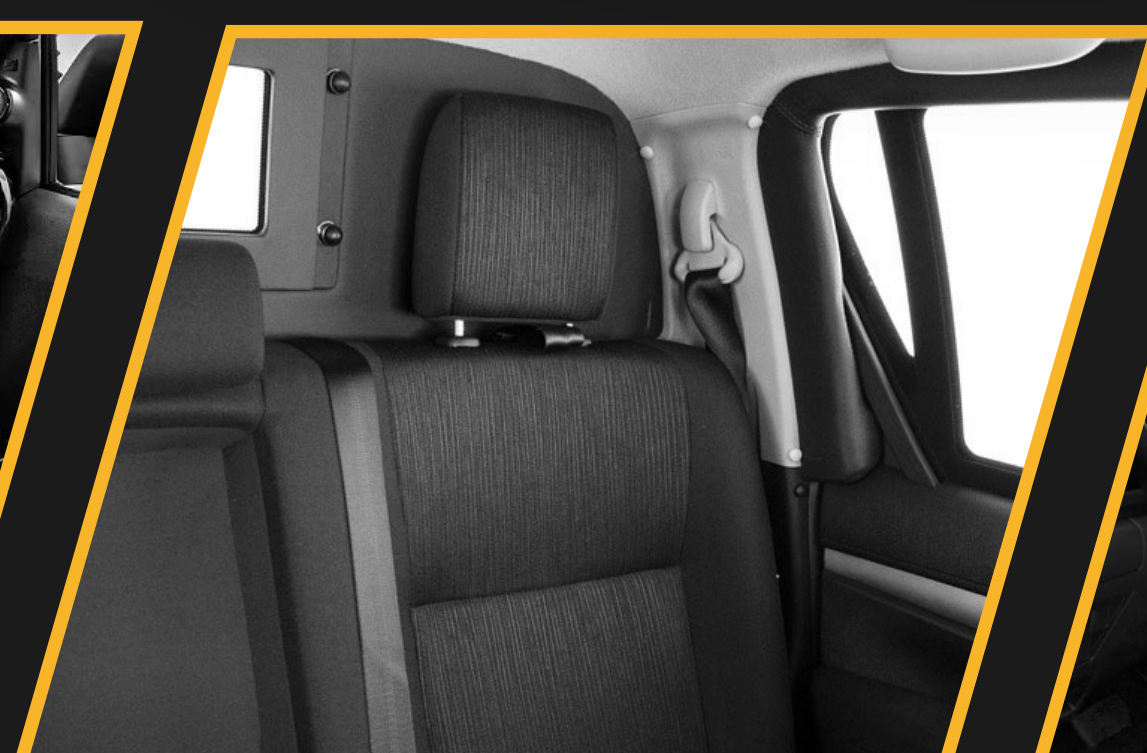
- B6+ Armour Materials (7.62 x 51 NATO)

Heavy-duty components :

- Clutch and power-enhanced chip for improved performance.
- Heavy-duty braking system for superior stopping power.
- High-end suspension system for better stability on rugged terrains.

Additional Protection and Firepower:

- Ram bumper and cargo protection for added durability.
- 360° heavy machine gun mount for enhanced firepower.



Bullet Proofing Protection Level B6

Armored Personnel Carrier SAGR

- **Armored Personnel Carrier (APC)** : Designed for Law Enforcement personnel transportation in Pakistan.
- Built on a heavy-duty chassis, powered by a 200 horsepower, 4.5L V8 engine with a 5-speed manual transmission @ 3400 RPM.
- **Capacity** : 8-person multi-purpose tactical vehicle for transporting troops to dangerous locations.
- **Chassis** : Mono-hull design on a robust, strong chassis for enhanced durability.
- **Protection** : Superior protection against firearms and rifles, ideal for high-risk areas prone to clashes and ambushes.
- **Drive System** : 4x4 wheel drive, ensuring access to remote and difficult-to-reach locations without safety concerns.
- **Transparent Armor** : B6+ (7.62x51 NATO) rated ballistic glass,
- **Armor Level** : B6+ armor materials (7.62 x 51 NATO) with an optional B7-level armoring upgrade.
- **Suspension** : High-end suspension system for smooth mobility in harsh terrains.
- **Brakes** : Heavy-duty brakes for reliable stopping power under challenging conditions.
- **Firing Ports** : Equipped with firing ports for tactical operations.
- **Tires** : Run-flat tires for added reliability and durability in hostile environments.



Bullet Proofing Protection Level B6
Also Available In B7

BURAQ

Armored Vehicle

• Vehicle Classification :

- The SMTAC Buraq is an all-purpose armored vehicle (APAV) specifically designed for personal and VIP transportation in high-risk environments, such as conflict zones and areas prone to violence. The vehicle is engineered to provide optimal protection while maintaining operational versatility.

• Powertrain and Performance :

- Equipped with a powerful 381 horsepower, 5.7L V8 engine, the Buraq offers robust performance for demanding missions.
- Features a 6-speed automatic transmission, a two-piece shaft, and a 10.5-inch ring gear, ensuring the capacity to handle high torque and challenging operational conditions.

• Vehicle Configuration and Design :

- Built on a heavy-duty chassis with a mono-hull design, the Buraq Long Wheel Base (LWB) configuration ensures durability and strength for both tactical and transport missions.
- Accommodates up to 10 passengers, providing ample space for personnel and equipment during missions.

• Protection and Armoring :

- The Buraq LWB offers superior protection against firearms and rifles, with full vehicle armoring certified to CEN B7, NIJ IV, and STANAG III ballistic standards.
- The armoring extends to the front, sides, rear, roof, and floor, ensuring comprehensive protection from incoming ballistic threats from all angles.

• Drive System and Mobility :

- Features a 4x4 wheel drive system, enabling it to navigate difficult and remote terrains with ease. This capability is particularly valuable for reaching hard-to-access areas such as mountainous regions, rural zones, or conflict-prone environments.

• Target Environments :

- The Buraq is designed for operations in high-risk areas, particularly those prone to ambushes, armed conflicts, or civil unrest. It provides essential protection for personnel while ensuring safe and efficient transport to and from dangerous destinations.

• Technological Features :

- Equipped with advanced wheel technology and a powerful petrol engine, the Buraq is designed to offer both reliability and performance in intense operational environments. Its technical configuration ensures it can handle extended missions without compromising safety or operational efficiency.

• **Strategic Role and Usage :**

- The Buraq LWB is ideal for transporting VIPs, high-profile individuals, or military and law enforcement personnel in areas with heightened security threats.
- Its versatility and robust protection make it suitable for a range of applications, including VIP transport, troop deployment, convoy protection, and tactical operations in hostile regions.

• **Overall Assurance :**

- Combining superior ballistic protection, powerful performance, and operational versatility, the Buraq LWB offers a reliable, high-security transport solution for personnel in high-risk environments. Its advanced armoring and mobility features ensure both safety and efficiency during critical missions.



Bullet Proofing Protection Level B6
Also Available In B7

Cash Transit vehicles

SMTAC is dedicated to creating some of the most secure Cash-in-Transit (CIT) vehicles on the market today. Our vehicles are trusted by many corporate clients, including banks, money exchange companies, and multinational corporations, for transporting cash and assets. At SMTAC, our team can customize any chassis or vehicle to provide the best protection tailored to your specific needs.

- **Bulletproof Protection Levels :**

Transparent Armor: B4+ (9mm) or B6 level armoring option also available.

- **Vertical Panel Protection :**

Enhanced protection on all vertical surfaces.

- **Certified Bullet-Resistant Glass & Steel :**

Provides superior defense against firearms.

- **Roof Protection :**

Reinforced roof for additional security from above.

- **Doors Overlap Protection :**

Designed to prevent entry by protecting door seams.

- **Ballistic Glass Replacement :**

OEM glass is replaced with curved, ballistic-grade glass for enhanced protection.

- **Ballistic Glass Rating :**

All glass is rated to B4+ standards (9mm).

- **Armoring Material :**

B4+ armor materials, providing high protection against 9mm ammunition.

- **Upgraded Suspension & Brakes :**

Improved suspension and braking systems for enhanced stability and performance under heavy loads.

- **Base-to-Vehicle Communication :**

Enables secure communication between the vehicle and its base during transit.

- **Mechanical & Electronic Controls :**

Offers both mechanical and electronic control options for versatile operation.



**Bullet Proofing Protection Level B6
Also Available In B7**

Armored Guard Posts: Secure Your Premises

- **Product Overview :** Our advanced armored guard posts are designed to provide Level B6 protection, ensuring optimal safety for personnel and assets in high-risk environments. These guard posts combine cutting-edge technology with robust construction to offer unparalleled security and comfort.
- **Bulletproofing Protection Level :**
 - **Transparent Armor :** Equipped with B6+ (7.62x51mm NATO) rated transparent armor to offer high resistance against ballistic threats.
 - **Ballistic Glass :** OEM glass is replaced with curved ballistic glass rated to B6 standards, providing comprehensive protection against 7.62x51mm NATO rounds.
 - **Armor Materials :** Constructed using B6+ armor materials for enhanced defense, with an optional B7 level armoring available for higher ballistic protection.
- **Key Features :**
 - **6mm Steel Plate Construction :** The guard post is built with 6mm thick steel plates, ensuring durability and resistance against external threats.
 - **Climate Control :** Integrated air conditioning and heating systems provide comfort for personnel, ensuring a stable working environment regardless of external weather conditions.
 - **Battery Backup and Emergency Lighting :** The guard post is equipped with a battery backup and emergency lighting, ensuring continuous operation during power outages and providing visibility in low-light conditions.
 - **CCTV with Night Vision :** Integrated CCTV cameras with night vision capability provide 24/7 surveillance and monitoring of the surrounding area, enhancing security at all times.
 - **Ballistic Glass Windows :** The guard post features ballistic glass windows, offering visibility while maintaining protection against gunfire and other ballistic threats.
 - **Reinforced Doors, Roof, and Floor :** The structure includes reinforced doors, a fortified roof, and a ballistic floor, ensuring comprehensive protection from all angles.
 - **Internal Storage and Seating :** The guard post includes internal storage for equipment and supplies, and seating for 2-3 personnel, providing operational flexibility and comfort during extended shifts.
- **Dimensions :**
 - **Size :** The guard post measures 8 ft x 6 ft x 7 ft, providing ample space for personnel and equipment while maintaining a compact footprint for ease of deployment.
 - **Warranty and Durability :** The armored guard post comes with a 1-year warranty on the structure and a 6-month warranty on electrical components, ensuring reliability and peace of mind.
 - **Overall Assurance :** Our armored guard posts offer the ideal combination of high-level ballistic protection, advanced security features, and comfort, making them the perfect solution for securing sensitive locations in high-risk environments



Benefits of Armoring :

- **Superior Vehicle Survivability :**
Enhanced ballistic protection and IED blast resistance from all angles.
- **High On- and Off-Road Performance :**
Optimized for evasive maneuverability in diverse terrains.
- **Wide Operational Temperature Range :**
Capable of performing in extreme temperature conditions.
- **Retention of OEM Vehicle Exterior and Features :**
Maintains original vehicle aesthetics and functionality.
- **Increased Durability and Reliability :**
Reduced maintenance, lower servicing costs, and minimized downtime.

SMTAC Armoring Technology :

- **Advanced IED Blast Protection :**
Integrated, interlocked large armoring panels maximize the strength of the armoring material.
- **Overlapping Armoring Panels :**
All panels are installed in an overlapping layout to eliminate gaps in protection. Full 360° "bullet catcher" overlap systems are installed at all vehicle openings, from top to bottom.
- **Reinforced Vehicle Cabin :**
The strength of the cabin is enhanced by interlocking large armoring panels, acting as a roll cage for added protection.
- **Minimized Welding and Bolting Points :**
Fewer welding and bolting points prevent the collapse of armoring panels in the event of an explosive attack.
- **Upgraded Chassis, Suspension, and Brakes :**
Heavy-duty, high-performance components are added to support the increased weight of the armor.
- **Armored Engine Bay and Fuel Tank :**
Essential components are armored to ensure vehicle functionality, even during evasive maneuvers.



Opaque Armor :

SM Traders (SMTAC) exclusively uses certified ballistic steel in the production of all armored vehicles. This pre-certified ballistic-grade steel undergoes rigorous testing by an independent, accredited ballistic laboratory to ensure it meets SMTAC's required protection levels, based on the standards outlined in the Ballistics Standards section.

All opaque armor components are pre-fabricated using advanced laser and plasma cutting technology and stored until the assembly process begins. This approach enables fast production times, as all components are readily available. The design of the opaque armoring system aims to minimize the number of panels used, reducing the need for multiple welds and joints. Wherever possible, "flat panels" are utilized, which increases the rigidity and overall strength of the armor package.

As part of this design philosophy, the rear tailgate and doors remain standard. Behind these, a ballistic steel door with a ballistic glass window is fitted, surrounded by steel overlaps. This configuration significantly enhances the rigidity of the ballistic cage and provides additional protection against bullet penetration and IED blast attacks.

The use of special ballistic steel extends to the vehicle's floor area and footwells, further increasing protection against blast and IED attacks. This armor exceeds B6 protection levels for the floor and roof areas by providing 90° angle attack prevention (B6 typically offers 45°). Careful consideration was given during the original design phase to ensure complete ballistic protection in the front bulkhead area, where mechanical and electrical components access the passenger compartment from the engine bay.

Substantial overlaps of ballistic steel around all door and window apertures provide improved protection against weapons attacks targeting these vulnerable areas. These overlaps extend to the bottom of the doors, offering additional protection in critical spots

The opaque armor system is secured through a continuous welding process, with overlapping welds to ensure maximum protection inside the monocoque structure. The armor is bonded to the chassis, maintaining a rigid and fixed position within the passenger compartment. All panels are coated with an anti-corrosive material, and rubberized anti-corrosive sealants are used wherever the system interfaces with the original vehicle body, preventing corrosion.

Transparent Armor :

Referred to as Lightweight Transparent Armor, SMTAC Glass offers a superior level of protection against a wide range of security threats, from random acts of street violence to the protection of heads of state. The windows are composites of glass and polycarbonate substrates, laminated with interlayers designed to absorb energy from various ballistic threats.

The Transparent Armor design is :

- Distortion-free.
- Designed to resemble conventional automotive glass.
- Thinner than all-glass laminates to minimize air gaps.
- Unaffected by temperature fluctuations.
- Provides reliable protection against a variety of lethal weapons

SMTAC replaces existing glass with matching curved glass, offering maximum security, superior optics, robust construction, and a longer service life.



Floor Protection :

Steel armor or a Kevlar bomb blanket is sealed to the entire floor of the vehicle. Designed to absorb bomb fragmentation, the armor is concealed beneath the carpet and seats, preserving the vehicle's original appearance.



Suspension and Shocks :

SMTAC highly recommends that clients begin the armoring process of their vehicles with the installation of heavy-duty suspension components specifically designed to evenly distribute the weight of armored vehicles. This helps facilitate the modification and upgrade of the suspension and shocks.

As a standard practice, each vehicle's suspension and shocks are modified according to the mechanical requirements of the armored vehicle.



Brakes :

The rotors and brake pads of armored vehicles are replaced with a specially manufactured braking system designed to withstand the excessive temperatures generated during operation. This enhances the dynamic braking force of the armored vehicle.

The advanced brake systems are engineered to handle the increased weight and stress of armored vehicles, ensuring optimal stopping power and safety in high-risk situations. These heavy-duty ceramic brakes offer superior heat dissipation, reducing wear and extending the lifespan of the braking components, even in the most demanding environments.



Run-Flat Tire System :

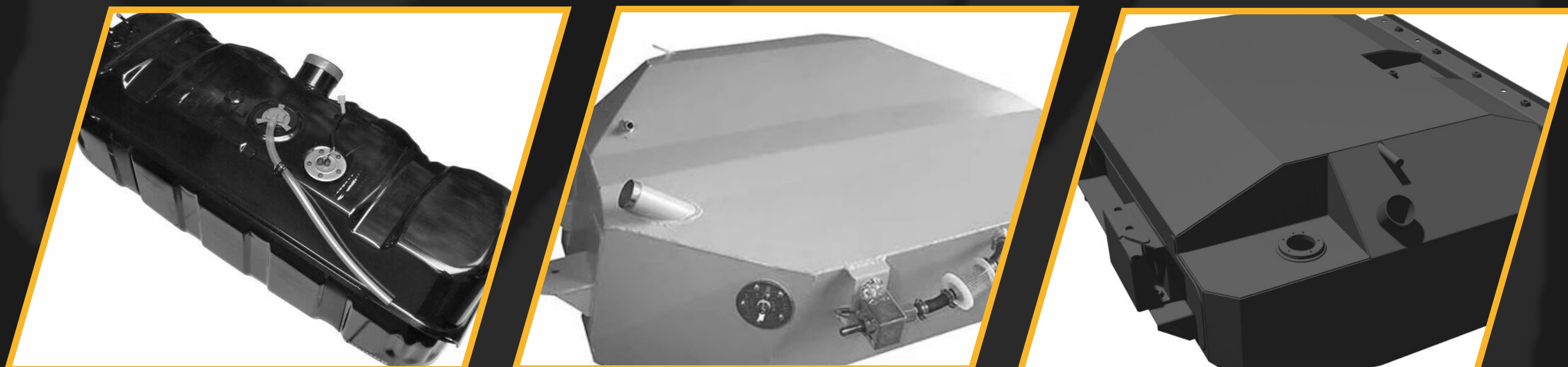
The Run-Flat Tire System allows the vehicle to travel up to 50 km at speeds of up to 50 km/h (depending on road conditions) even with flattened tires. A ballistic, rubberized plastic "roller" ring is designed, molded, and installed inside each tire around the rim.



Ballistic Wrap, Anti-Explosive Fuel Tanks :

Designed to suppress explosions that may occur in the fuel tank, Anti-Explosive Fuel Tanks are installed on all vehicles as part of our standard package.

These tanks are reinforced with specialized materials to minimize the risk of fire or explosion upon impact, providing an additional layer of security. Combined with our comprehensive armoring solutions, they ensure protection for passengers in high-threat scenarios.



Dual Ram Bumpers :

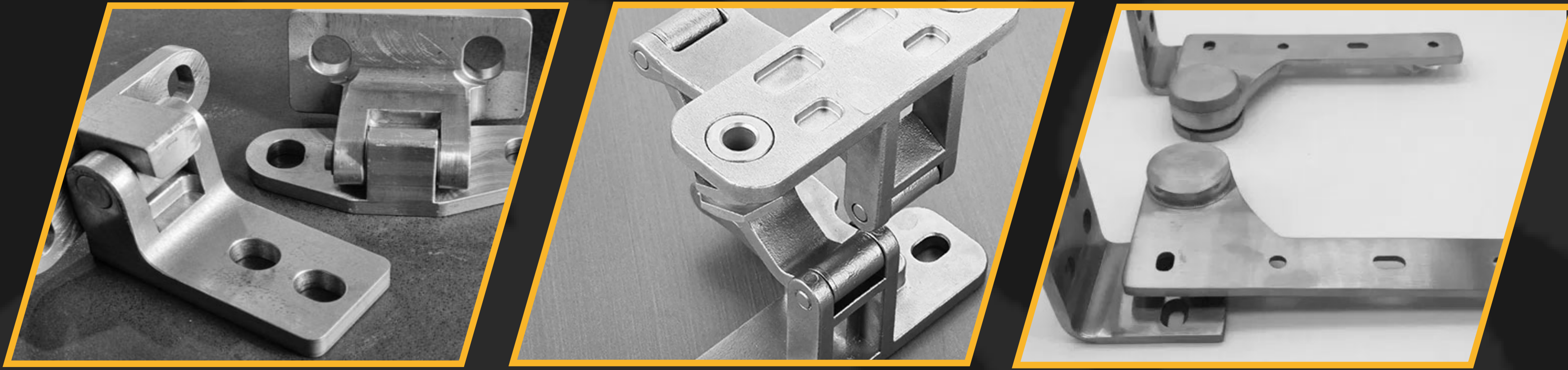
The front and rear ram bumpers allow each vehicle to ram its way out of dangerous situations without causing inoperable damage to the armored vehicle. Additionally, this modification prevents the corners of the vehicle from being rammed into the tires, thus reducing the risk of making the armored vehicle inoperable.



Hinges :

High-end hinges are installed to accommodate the extra weight of the doors. These hinges are single-piece units that ensure long-lasting protection against impacts.

The heavy-duty door hinges are reinforced to support the additional weight of the ballistic steel and glass, ensuring smooth operation without compromising security. Engineered for durability, they provide reliable performance in demanding conditions.



Window Actuators :

SMTAC provides high-performance window actuators specifically designed for armored vehicles, offering reliable and smooth operation of bulletproof windows. Built for durability and precision, these actuators enhance security while ensuring consistent functionality in demanding environments.



Armored Panels Assembly :

Doors, pillar posts, side panels, kick panels, firewall, cargo compartment, and headers (laterals) are armored with air-hardened, heat-treated ballistic steel in accordance with defined protection standards.

This material is installed inside the doors and cabin cavities, and the original door and cabin panels are reinstalled.



Who is Secure Motors?

Secure Motors – SMTAC (a subsidiary of SM Traders) is a premier vehicle armoring company that specializes in armoring all major makes and models of cars and SUVs while preserving the vehicle's original appearance and performance. The SMTAC team has been armoring civilian and military vehicles for over 20 years and has produced more than 5,000 armored passenger vehicles. By using proprietary armoring designs, advanced installation techniques, and the latest lightweight armoring materials, the SMTAC team provides the most technologically advanced protected vehicles available. These vehicles have been delivered to heads of state, corporate executives, celebrities, scholars, community leaders, and civilian contractors across Pakistan.

- **Is legal documentation required to own an armored vehicle ?**

Armor levels are determined based on each individual's perceived threats and commuting patterns. One "size" (i.e., level or package) does not fit all customers' requirements.

To determine the best armoring level and package for you, contact an SMTAC professional who can assess your needs and guide you in selecting the ideal protection.

- **What parts of a vehicle get armored ?**

The primary purpose of armoring is to protect the passengers. Our armor engineers focus on the occupants first, creating a cocoon of protection around the passenger cabin. SMTAC armors the entire passenger compartment, including the glass, floor, pillar posts, roof, and doors, providing maximum protection for passengers. Additionally, other critical areas such as the battery, fuel tank, tires, and ECM module are also armored for added security.

- **How long will it take to armor my vehicle ?**

Our delivery times currently range from 30 to 45 working days, depending on the type of vehicle. We can reduce the timeline by ensuring that all necessary armoring components are available in stock for the most popular vehicle brands.

- **Can any vehicle be armored ?**

Yes, any vehicle can be armored. However, some vehicles are more conducive to armoring than others. For more information, please contact us.

- **How far will run-flat tires carry me if they are shot out ?**

Run-flat tires will safely carry you for up to 50 miles, operating at speeds of up to 50 miles per hour, depending on road conditions. This distance is generally more than sufficient to escape a dangerous situation and reach a "safe zone."

- **Does an armored vehicle make noise ?**

Armoring acts as an acoustic buffer, making the armored vehicle quieter. However, over time, noises may occur due to improper use. To address this, we offer a two-year guarantee to fix any such issues.

- **Does the resale value of an armored vehicle diminish ?**

Armoring is considered an added feature. When a client intends to sell the vehicle, it is appraised with the added value of the armoring.

- **What warranties are included with an armored vehicle ?**

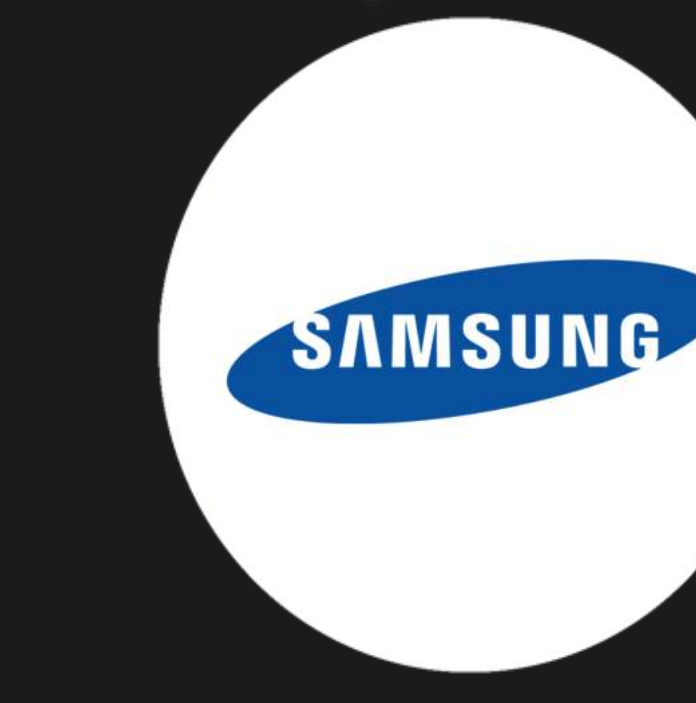
We offer a 24-month warranty on our armored vehicles. Our suppliers provide materials that meet the most rigorous international standards of protection. Additionally, our customer service team, led by our Chief Client Officer (CCO), is dedicated to addressing all customer needs. We also have a dedicated client services department to resolve any issues related to our armored vehicles.

- **Is there any legal requirement for owning an armored vehicle ?**

Yes, a No Objection Certificate (N.O.C.) is required from the Ministry of Interior, Government of Pakistan, to own and operate an armored vehicle.



Our valuable Clients :





Thank you for choosing Secure Motors (SMTAC). We sincerely appreciate the trust you have placed in us and recognize the responsibility that comes with it. Our commitment to providing you with unmatched protection, reliability, and service is unwavering. At the core of everything we do lies a deep dedication to your safety and satisfaction.

We are honored to be part of your journey, and we take our role in safeguarding you seriously. With Secure Motors by your side, you can rest assured that we will ensure your secure passage through any uncertainty that may arise.



0303-9234222 0303-9234333

bulletproofpakistan.com

Design and Creative by
Runway Advertising Pakistan Pvt Ltd